


by  THE BUGGY BARN

Wingin It



49 West 37th Street
New York, NY 10018
Tel: 212-686-5194 fax: 212-532-3525
Toll Free: 800-294-9495
www.henryglassfabrics.com

68" x 80"



Henry Glass & Co., Inc.



Finished Quilt Size 68" x 80"
 Designed by Sue Falkowski

Wingin It By The Buggy Barn



T111-76



T111-88



T111-98



T118-33



T118-88



T118-98



T119-33



T119-88



T119-98



T180-22



T180-33



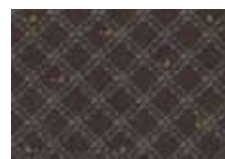
T180-76



T181-38



T181-88



T181-98



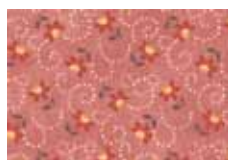
T182-38



T182-88



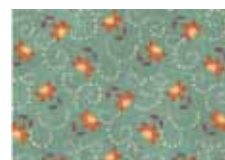
T182-98



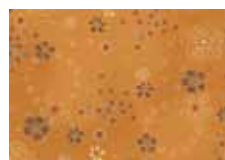
T183-22



T183-38



T183-76



T184-38



T184-88



T184-98



T185Y-22



T185Y-33



T185Y-38



T185Y-76



T186Y-22



T186Y-33



T186Y-88



T186Y-98



T187Y-33



T187Y-76



T187Y-88



T187Y-98

Yardage

FQ (18" x 22") of the following:

T111-76/88, T118-33/88/98, T119-88/98, T180-33/76,
 T181-38, T182-88, T183-38/76, T184-38/98,
 T185Y-33/38/76, T186Y-33, T187Y-33/76

Fat 8th (9" x 22") of the following:

T180-22, T183-22, T185Y-22, T186Y-22, T186Y-88/98,
 T187Y-88/98

Additional Yardage

1 yd T119-33 Gold Stars
 5/8 yd T182-38 Rust Dots
 1/2 yd T181-88 Red Trellis
 5/8 yd T184-88 Red Tossed Flowers
 1-1/2 yd T111-98 Grey Folk Flowers
 1 yd T181-98 Grey Trellis
 3/4 yd T182-98 Grey Dots
 4 1/4 yards for backing
 Fusible webbing for appliqué

Cut strips from the width of the fabric. Seam allowance is 1/4". It is helpful to label the pieces as you cut.

Cutting Requirements

Gold Words T178-33

- (2) 6 1/2" squares for roof blocks
- (1) 2 1/2" x 6 1/2" rectangle for bird house
- (3) 6" x 6 1/2" rectangles for short pole blocks

Gold Stars T179-33

- (1) 6 1/2" strip cut into:
 - (2) 6 1/2" squares for bird house roof blocks
 - (2) 2 1/2" x 6 1/2" rectangles for bird house blocks
 - (3) 6 1/2" x 6" rectangles for short pole blocks
- (9) 1 1/2" strips for checkerboard border
- (1) 6" x 12 1/2" rectangle for large pole block

Gold Calico T180-33

- (1) 6 1/2" square for roof block
- (2) 2 1/2" x 6 1/2" rectangles for bird house
- (2) 6" x 6 1/2" rectangles for short pole blocks

Rust Dots T182-38

- (7) 1 1/2" strips for inner border
- (1) 6 1/2" strip, cut into:
 - (1) 6 1/2" square for roof
 - (3) 6 1/2" x 6" rectangles for short pole blocks
- (1) 6" x 12 1/2" rectangle for long pole block

Rust Tiny Flower Swirl T183-38

- (2) 6 1/2" squares for centers of large stars

Rust Tossed Flowers T184-38

- (2) 6 1/2" squares for centers of large stars

Gold Large Plaid T185Y-33

- (1) 6 1/2" square for roof block
- (2) 2 1/2" x 6 1/2" rectangles for bird house

Gold Plaid T186Y-33

- (1) 6 1/2" square for bird house roof
- (1) 6" x 6 1/2" rectangle for short pole block

From a Variety of Gold & Rust Fabrics,

cut a total of:

- (112) 2" squares for small star points
- (56) 1" squares for small star centers

Red Folk Flower T177-88

- (16) 3 1/2" squares for large star points
- (8) 2" squares for centers of large stars

Red Words T178-88

- (1) 6 1/2" x 8 1/2" rectangle for bird house

Red Trellis T181-88

- (2) 3 1/2" strips cut into:
 - (16) 3 1/2" squares for large star points
- (2) 6 1/2" x 8 1/2" rectangles for bird houses
- (8) 2" squares for centers of large stars

Red Dots T182-88

- (1) 6 1/2" x 8 1/2" rectangle for bird house

Red Tossed Flowers T184-88

- (6) 1 1/2" strips for inner border

From a Variety of Pinks & Reds, cut a total of:

- (14) 3 1/2" squares for centers of small stars

Grey Folk Flower T177-98

- (7) 6 1/2" strips for outer border

Grey Trellis T181-98

- (9) 1 1/2" strips for checkerboard border
- (2) 6 1/2" x 12 1/2" rectangles for bird house roofs

Grey Dots T182-98

- (8) 2 1/2" strips, pieced together end to end for binding

Grey Plaid T186Y-98,

- (2) 6 1/2" x 12 1/2" rectangles for bird house roofs

Grey Tiny Plaid T187Y-98

- (2) 1 1/2" strips, cut into:
 - (6) 1 1/2" x 6 1/2" rectangles for pole blocks
 - (1) 1 1/2" x 12 1/2" rectangles for large pole block

Lt. Jade T177-76, T180-76, T183-76, T185Y-76,

T187Y-76: cut a total of:

- (16) 3 1/2" squares for large stars
- (16) 3 1/2" x 6 1/2" rectangles for large stars
- (56) 2" x 3 1/2" rectangles for small stars
- (56) 2" squares for small stars

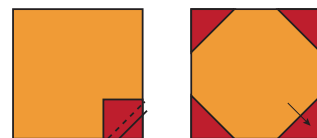
From a Variety of all fabrics, cut a total of:

- (36) 3 1/2" x 6 1/2" rectangles for flying geese blocks
- (72) 3 1/2" squares for flying geese blocks
- (4) Pink heart appliqués
- (9) Bird and (9) wing & eye appliqués

Assembly

Large Stars - Make 4 - 12 1/2" unfinished

1. Draw a line from corner to corner on the wrong side of (4) 2" red squares
2. With right sides together, place a red square on the corner of 6 1/2" rust center square. Sew on the drawn line. Trim corner 1/4" from seam. Repeat on each corner and press toward the red squares.

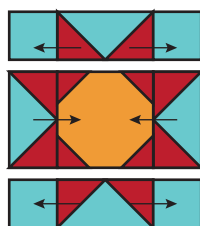


3. Draw a line from corner to corner on the wrong side of (8) 3 1/2" red squares. With right sides together, place a red square on one end of a lt. jade 3 1/2" x 6 1/2"

rectangle. Sew on the drawn line. Trim corner and repeat on the other end of the rectangle. Make (4) flying geese units.



4. Sew one flying geese unit to each side of the rust center unit. Sew a $3\frac{1}{2}$ " lt. jade square to each side of the remaining two flying geese units. Sew to the top and bottom of the center, creating a star block. Make 4.

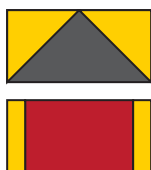


Small Stars - Make 14 - $6\frac{1}{2}$ " unfinished

1. The small stars are made in the same manner as the large stars. The centers are $3\frac{1}{2}$ " pink or red squares with 1" gold squares. Flying geese units are 2" gold squares and 2" x $3\frac{1}{2}$ " lt. jade rectangles. The outer corners are 2" lt. jade squares. Make 14.

Bird House Blocks - Make 4 - $12\frac{1}{2}$ " unfinished

1. Sew a $2\frac{1}{2}$ " x $6\frac{1}{2}$ " gold rectangle to each side of a $6\frac{1}{2}$ " x $8\frac{1}{2}$ " red rectangle.
2. Follow the directions above for flying geese units to make the roof. Use $6\frac{1}{2}$ " gold squares and $6\frac{1}{2}$ " x $12\frac{1}{2}$ " grey rectangles. Sew the roof and house sections together. Make (4) bird house blocks.



Bird House Pole Blocks

1. Sew a 6" x $6\frac{1}{2}$ " gold rectangle to the sides of a $1\frac{1}{2}$ " x $6\frac{1}{2}$ " grey rectangle. Make (6). They measure $6\frac{1}{2}$ " x $12\frac{1}{2}$ ".
2. Sew a 6" x $12\frac{1}{2}$ " gold rectangle to both sides of a $1\frac{1}{2}$ " x $12\frac{1}{2}$ " grey rectangle. Make (1). It measures $12\frac{1}{2}$ " x $12\frac{1}{2}$ ".

Flying Geese Blocks

1. Follow directions above and make (36) flying geese from assorted $3\frac{1}{2}$ " squares and $3\frac{1}{2}$ " x $6\frac{1}{2}$ " rectangles.

Quilt Top Assembly

Arrange the blocks into columns according to the diagram. Sew the sections together.

Borders

Checkerboard Border

1. Make (9) strip sets from $1\frac{1}{2}$ " strips of gold stars and grey trellis. Cut the strip sets into (224) $1\frac{1}{2}$ " pieces.



$1\frac{1}{2}$ "

2. Sew (60) $1\frac{1}{2}$ " sections together in a checkerboard strip. Make (2) and sew to each side of the quilt top.
3. Sew (52) $1\frac{1}{2}$ " sections in a checkerboard strip. Make (2) and add to the quilt top and bottom.

Inner Borders and Outer Border

Your measurements may differ slightly, so measure your quilt top before cutting the borders.

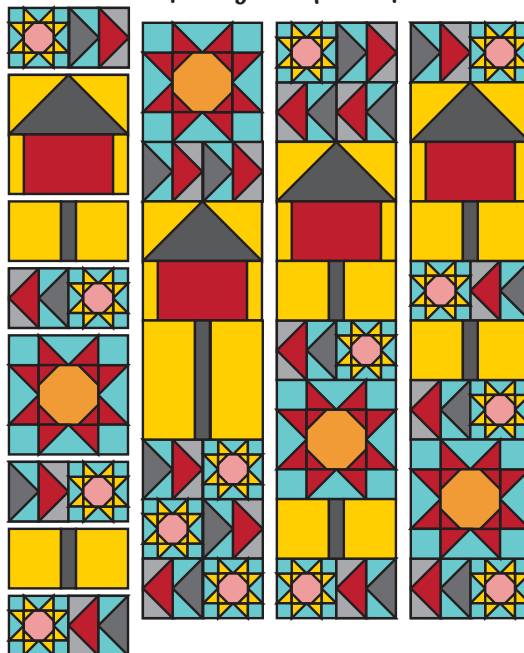
Trim selvages from the ends of (6) $1\frac{1}{2}$ " red tossed flowers strips. Sew together into a long strip and cut:

- (2) $1\frac{1}{2}$ " x $64\frac{1}{2}$ " pieces and sew to each side of the quilt.
 (2) $1\frac{1}{2}$ " x $54\frac{1}{2}$ " pieces and sew to the top and bottom of the quilt.

Repeat with (7) $1\frac{1}{2}$ " gold dots strips and cut:

- (2) $1\frac{1}{2}$ " x $66\frac{1}{2}$ " pieces and sew to each side of the quilt.
 (2) $1\frac{1}{2}$ " x $56\frac{1}{2}$ " pieces and sew to the top and bottom of the quilt.

Repeat with (7) $6\frac{1}{2}$ " grey folk flower strips for the outer border. Cut: (4) $6\frac{1}{2}$ " x $68\frac{1}{2}$ " pieces and sew to sides and top and bottom, completing the quilt top.



Appliqué

Using your favorite appliqué method, appliqué pink hearts to the bird houses. From assorted scraps, prepare nine birds. Use picture of the quilt as a guide to arrange your birds. Increase or decrease your flock as desired! Layer with batting and backing. Quilt and bind with $2\frac{1}{2}$ " strips grey dot. Enjoy!